



jordanfishwick

Stanley Road
Manchester



Stanley Road Manchester M16 9DL

£850 Per Calendar Month



The Property

**** AVAILABLE FEBRUARY **** This well proportioned Ground floor one bed property is set within a well maintained block being Stanley Court. The property offers off road parking (not allocated) and benefits from its own entrance as well as communal entrance. On entrance to the property from your private entrance there is an outdoor seating area with front door leading directly into the lounge. Once inside there is a large lounge leading out to an internal hallway with main communal door entrance. There is a modern kitchen with appliances, modern bathroom with walk in shower and good sized double bedroom. Property is unfurnished.

***** To arrange a viewing please call
0161 860 4444 *****

Directions

- Council Tax Band A - EPC C
- Spacious One Bedroom
- Ground Floor
- Off Road parking
- Modern Kitchen
- Unfurnished
- Available February

Postcode - M16 9DL

EPC Rating - C

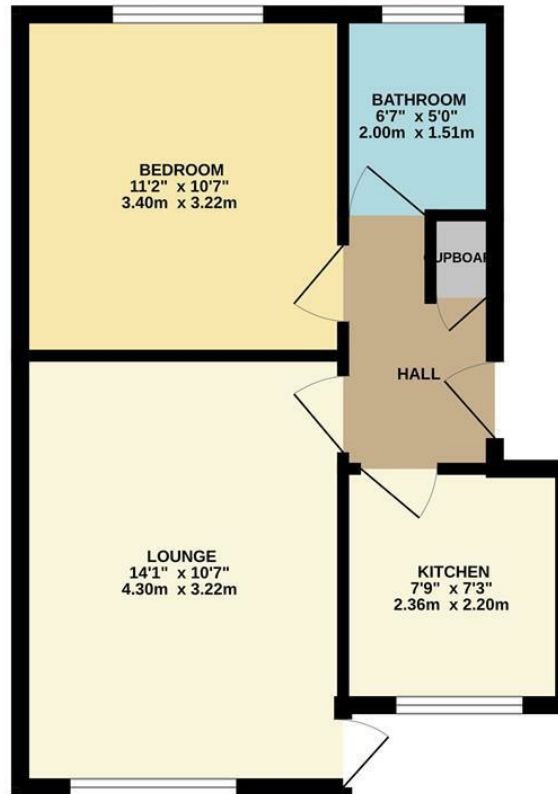
Floor Area - sq ft

Local Authority - Old Trafford

Council Tax - A



GROUND FLOOR
397 sq.ft. (36.9 sq.m.) approx.



TOTAL FLOOR AREA : 397 sq.ft. (36.9 sq.m.) approx.

Whilst every attempt has been made to ensure the accuracy of the floorplan contained here, measurements of doors, windows, rooms and any other items are approximate and no responsibility is taken for any error, omission or mis-statement. This plan is for illustrative purposes only and should be used as such by any prospective purchaser. The services, systems and appliances shown have not been tested and no guarantee as to their operability or efficiency can be given.
Made with Metropix ©2026



These particulars are believed to be accurate but they are not guaranteed and do not form a contract. Neither Jordan Fishwick nor the vendor or lessor accept any responsibility in respect of these particulars, which are not intended to be statements or representations of fact and any intending purchaser or lessee must satisfy himself by inspection or otherwise as to the correctness of each of the statements contained in these particulars. Any floorplans on this brochure are for illustrative purposes only and are not necessarily to scale.

Offices at: Offices at Chorlton, Didsbury, Disley, Hale, Glossop, Macclesfield, Manchester Deansgate, Manchester Whitworth Street, New Mills, Sale, Wilmslow and Withington

410-412 Barlow Moor Road, Chorlton, Manchester, M21

01618604444^{8AD}

chorlton@jordanfishwick.co.uk
www.jordanfishwick.co.uk